

Rose Grimble nee` Mattingly (1883 -1963)

Rose was born to Richard and Elizabeth Mattingly in 1883. She was baptised on January 21st of that year at St. Matthews Church, Kensington. Her father was a Greengrocer at 9 Eagles Terrace, Shepherds Bush in London. In 1901 she was living with her mother at a Eating House next to the Greenwich Park Railway Station. On the 24th December 1910 she marries Charles Grimble at Ockham in Surrey. Her sister, Ellen Louisa is one of the witnesses.

They next appear at Homewood Cottages in Ripley, Woking, where Charles is a Carter on a Farm.

They are not their long before they return to London and move to 39 Sandmere Road, Clapham in 1914. He is called up to serve in the army in the First World War in 1915 and is described as a Brewers Labourer living with his wife in their house in Clapham. He is discharged on the 20th May 1919 and receives a pension due to his being 60% disabled. The electoral register for 1920, shows them living with her sister, Mary and husband, Albert Masey. Their next move is to the next street, where they move into 19 Concanon Road the following year. In 1924 their son, Charles Albert James Grimble is born. It is here in 1929 she is at the death of her mother, Elizabeth, aged 81. They are there until 1932, when it rented by her nephew, Richard Mattingly. They move to 156 Cavendish Road in Wandsworth, where in the 1939 Census, Charles Grimble, aged 59 is working as a Brewers Labourer. They remain at this address until 1957 when they move to 37 Hillfords Place in Reigate. Rose dies in 1963, aged 81 and her husband a year later aged 84.

Rose Grimble nee` Mattingly (1883 -1963)

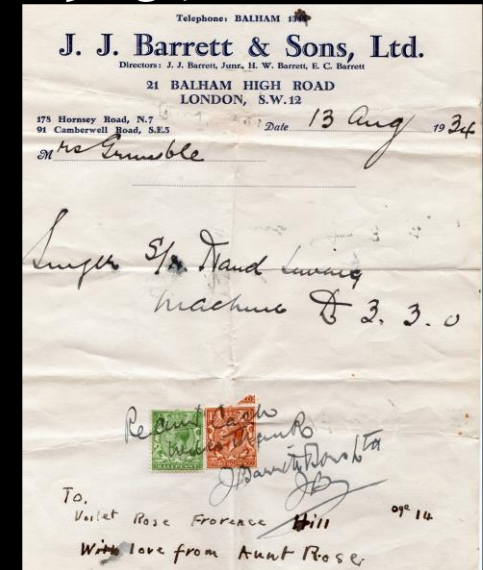


39 Sandmere Road (on the left). Brixton. London.

Rose Grimble nee` Mattingly (1882 - 1963)



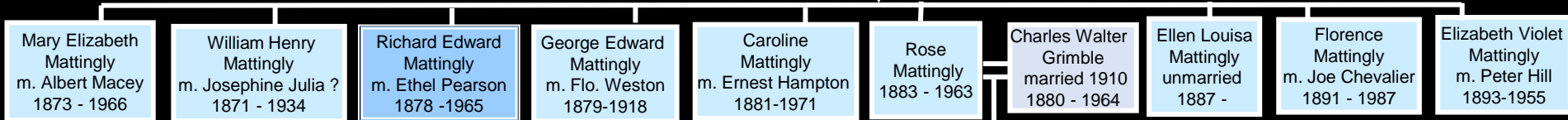
Charles and Rose Grimble at Mary Mattingly`s wedding in 1947



A receipt for a Singer Sewing Machine which was given to Violet Hill by her Aunt, Rose Grimble in 1934.

Richard Edward Mattingly
(Born in Eling)
1846 -1927

Elizabeth Herriot
Born in Spitalfields
1848-1929



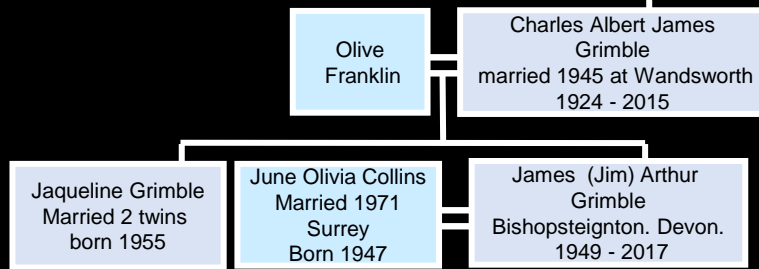
Reigate > 1947

PRINCE ALBERT SQUARE		
1474	Mew, Daisy E.	84
1475	Mew, Harry	84
1476	Grimble, Charles A. J.	82
1477	Grimble, Olive M.	82

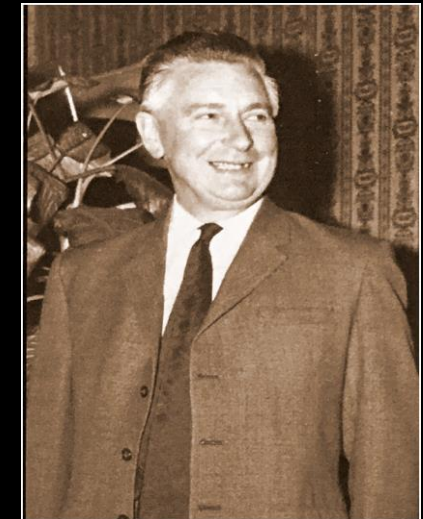
Electoral Register for 1947 show Charles Albert James Grimble and his wife, Olive at 82 Prince Albert Square, Reigate, Surrey.

Reigate > 1961

HILLFORD PLACE—cont.		
Grimble, Charles A. J.—J		37
Grimble, Charles W.		37
Grimble, Olive M.		37
Grimble, Rose		37



The Electoral Register for 1961 show Charles Walter Grimble and his wife Rose, living with their son, Charles Albert James Grimble and his wife, Olive at 37 Hillford Place, Reigate, Surrey.



Charles Albert Grimble (1924-2015)

Rose Grimble nee` Mattingly (1882 - 1963)



Rose Grimble



Elizabeth Hill

To Mrs Mattingly, 72 Sandmere Road, Clapham, London.
 The Postcard is to Elizabeth Mattingly, separated from her husband Richard Mattingly, then aged 80, the year before she died. She was at 72 Sandmere Road, Clapham, London, where her daughter Elizabeth and her husband Peter Hill lived. The photograph taken at Margate shows the two sisters -Elizabeth Hill (right)with her daughter, Violet (aged 9) with Rose Grimble (left) and her son, Charles (aged 4).

From Margate 1928.

My Dear Mother,

Do you know us it just what we wanted, but the sea was rough and Violet and Charlie could not swim. You have to laugh out they come and say we are shivering off they run for Bovril well we shall soon be home to tell you about it. Love Rose.



In 1928 they are on holiday in Margate. Violet Hill is writing to her mother about having many donkey rides with Charlie. her mother is living at 72 Sandmere Road, Clapham.

Rose Grimble nee` Mattingly (1883 -1963)



Brixton and Clapham Directory > 1925

CONCANON ROAD, Clapham (S.W. 2), from 66 Acre la. to Santley st. MAP Lt6.

WEST SIDE.

Calime Co. Ltd. plastering contractors (Concanon works)

1 Lowe George
 5 Lacey Mrs. Elizabeth
 7 Coxon William
 9 O'Connell Michael
 11 Holman Mrs. Mary A
 13 Tacchi Thomas Walter
 15 Cooper Miss Florence
 17 Taylor Mrs. Elizabeth
 19 Grimble Charles

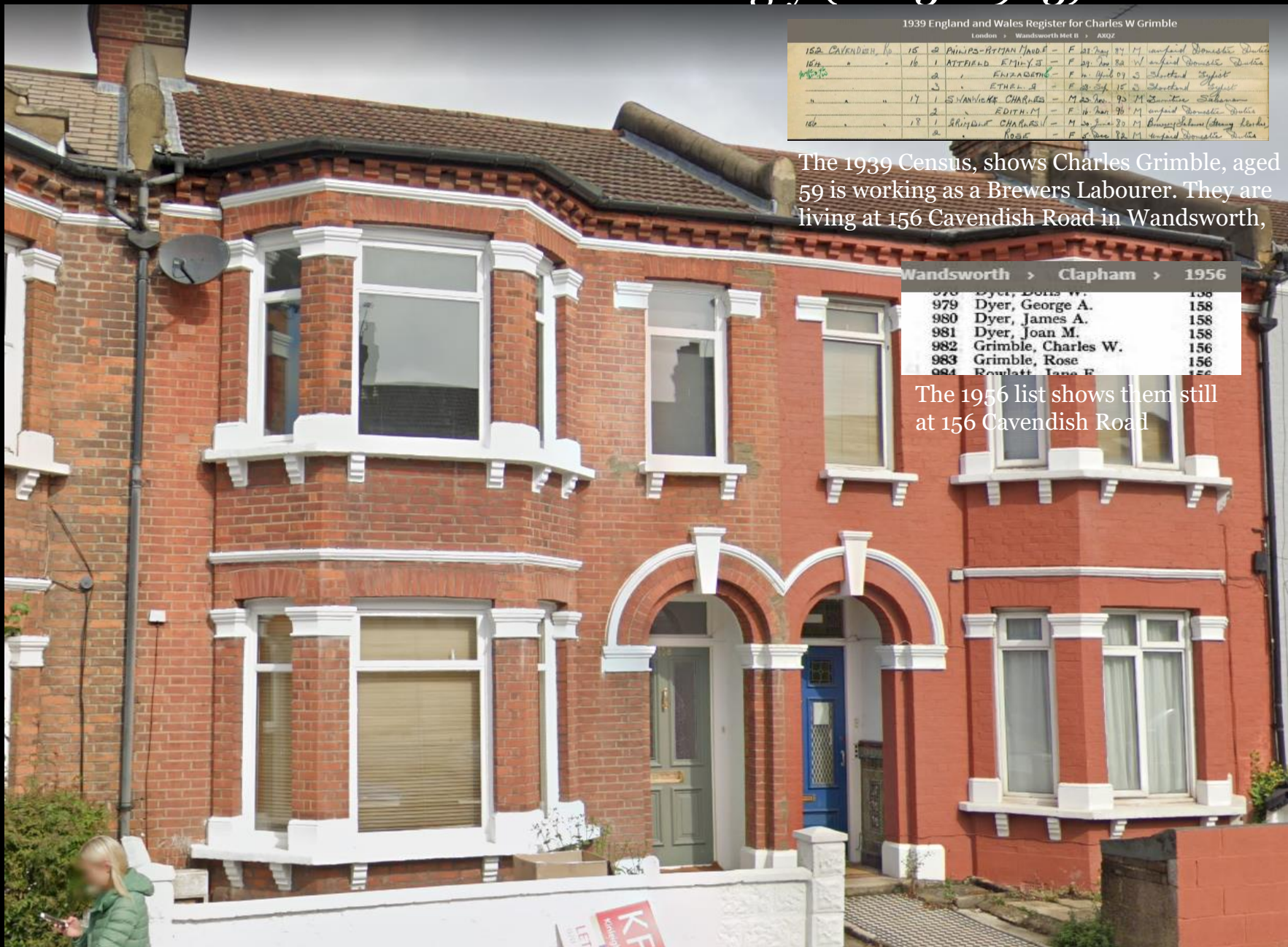
Lambeth > Lam

BRIXTON		STOCKWELL WARD.	
849	O O	Cherry, Harriet Salome	11
860	O O	Hall, Elizabeth	11
861	O O	Hill, Caroline	11
862	O O	Holman, Elizabeth Binmore	11
863	R O	Eady, Frederick	13
864	HO HO	Eady, Rosa	13
865	R —	Tacchi, Anthony	13
866	HO HO	Tacchi, Louisa Maud	13
867	R O	Tacchi, Thomas Walter	13
868	R O	Andrews, Harry	15
869	HO HO	Andrews, Lucy Kezia	16
860	HO HO	Austin, May Isabel	16
861	R O	Austin, William Alfred	16
862	HO HO	Chinnyah, Ethel Nellie	17
863	R O	Chinnyah, Francis Leopold	17
864	O O	Taylor, Elizabeth	17
865	R O	Wilds, Arthur	17
866	R O	Grimble, Charles	19
867	HO HO	Grimble, Rose	19

1925 Directory and 1927 Electoral Register have Rose and Charles living at 19 Conacon Road, Brixton

19 Conacon Road (on the left). Brixton. London.

Rose Grimble nee` Mattingly (1883 -1963)



1939 England and Wales Register for Charles W Grimble
London > Wandsworth Met D > AQ02

152	CAVENDISH, No	15	2	PHILIPS-BITJAN, David	-	F	01. Aug	87	M	unpaid Domestic Duties
164	"	16	1	ATFIELD, EMILY, S	-	F	03. Jan	88	W	unpaid Domestic Duties
			2	ELIZABETH	-	F	11. April	03	W	Unpaid Taxist
			3	ETHEL, S	-	F	08. Sep	15	W	Unpaid Taxist
		17	1	SWANNICK, CHARLES	-	M	20. Jan	93	M	Unpaid Sahanam
			2	EDITH, M	-	F	16. Jan	96	M	unpaid Domestic Duties
166	"	18	1	ABYDAN, CHARLES	-	M	20. Jan	83	M	Unpaid Domestic Duties
			2	ROSE	-	F	08. Dec	82	M	unpaid Domestic Duties

The 1939 Census, shows Charles Grimble, aged 59 is working as a Brewers Labourer. They are living at 156 Cavendish Road in Wandsworth,

Wandsworth > Clapham > 1956

978	Dyer, Boris W.	158
979	Dyer, George A.	158
980	Dyer, James A.	158
981	Dyer, Joan M.	158
982	Grimble, Charles W.	156
983	Grimble, Rose	156
984	Boullett, Jane F.	156

The 1956 list shows them still at 156 Cavendish Road

158 Cavendish Road, Clapham. Wandsworth.

Rose Grimble nee` Mattingly (1883 -1963)

Reigate 1959

REIGATE SOUTH-EAST WARD
(SOUTHERN PART)

HILLFORDS PLACE—cont.

271	Watkins, Leonard—J	29
272	Watkins, Mary V.	29
273	Holliday, Dennis—J	31
274	Holliday, Doreen R. E.	31
275	Lamb, Brenda	33
276	Lamb, Robert T. B.—J	33
277	Cooper, Kenneth G.—J	35
278	Cooper, Phyllis M.	35
279	Grimble, Charles A. J.—J	37
280	Grimble, Charles W.	37
281	Grimble, Olive M.	37
282	Grimble, Rose	37

The 1959 list shows them at 37 Hillfords Place, Reigate

GRIMBLE Charles Walter of Netherne Hospital Coulsdon Surrey died 4 November 1964 Probate London 18 January to Charles Albert James Grimble draughtsman. £998.

Charles Walter Grimble dies at the Netherne Hospital in Coulsdon, Surrey on the 4th November 1964. He leaves his estate to Charles Albert James Grimble, Draughtsman.

